

ES

Express Steel



**ATTACHMENTS • HOPPERS
TRACKS • SNOW PUSHERS**

(317) 657-5017

expressteelinc.com



Who Are We?

Express Steel is one of the most trusted names in skid steer attachments, snow pushers, hoppers, and tracks. Originally a snow pusher manufacturing company, Express Steel has grown to support these product lines with experienced and friendly support as well as pricing that makes sense.

At Express Steel, we believe that quality is an investment - not an expense. Whether you're buying for a farm, personal needs, or a commercial project, we understand that your top priority is getting a dependable product that performs flawlessly for years to come. That's why every attachment we build is constructed from premium US made materials, assembled by skilled craftsmen, and carefully inspected for durability and longevity.

Express Steel



SNOW PUSHERS

XP24

Low Profile Snow Pusher
for Mini Skid Steers



XP24

Low Profile Snow Pusher for
Skid Steers & Compact Tractors



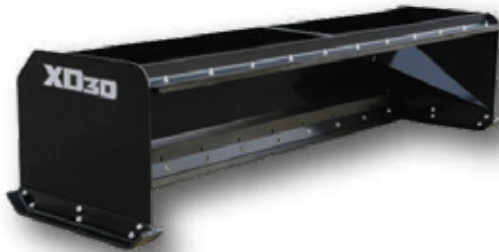
XP30

Snow Pushers for Skid Steers
& Compact Tractors



XD30

Pullback Snow Pushers for John
Deere & New Holland Skid Steers



XP36

Snow Pushers for Backhoes



XP42

HD Snow Pushers for Loaders



XP24/XP30

Turf Pushers for
Skid Steers



Color options for your snow pusher:

- *John Deere Green*
- *International Red*
- *Kubota Orange*
- *Black*
- *Caterpillar Yellow*
- *Blue*



SNOW PUSHERS

American Made with US Steel

Using the highest quality American steel, we manufacture built-to-last snow pushers with 3/8" sideboards and 3/16" to 1/4" moldboards. You can trust that it'll be strong, durable, and ready to take on any job.



Highest Quality at the Lowest Price

Understanding your need for top-notch equipment without breaking the bank, Express Steel commits to delivering excellence without the premium price tags often found with big brands. We're all about crafting superior equipment that fits comfortably within your budget.



Fast Lead Times

We have pushers in-stock and ready to ship. For any pusher that is ready and in inventory, it'll ship in 1-2 days with one of our trusted carriers. Ordering a custom pusher? It'll be on a truck within a week. We pride ourselves on quick processing and fast lead times to get you your equipment out the door and to you faster.



SNOW PUSHERS

Customizing Your Express Steel Pusher

Customizing your Express Steel pusher allows you to tailor the equipment to your specific needs and working conditions. These various add-ons have the potential to make your pusher more versatile, more durable, and more efficient for your snow removal needs. Our sales team is always available to help you select the best customization options to help you make the most of your Express Steel snow pusher.

Add-Ons for all Models:

- **Pullback Bars:** Adding a pullback bar to your pusher will enable you to rotate your pusher 90°, and be able to drag snow backwards, and pull snow away from buildings or garages.
- **Front Shoes:** If you opt to add on a pullback bar, front shoes can be added to protect your pusher. This is a good idea especially if you are using the pullback bar frequently.
- **Chain and Binder Kits:** We offer necessary parts to attach pushers with bucket mounts available for you if needed.



Add-Ons for XP36 and XP 42 Models:

- **Mounts:** Our larger pushers are compatible with both bucket or loader mounts.
- **Shoes:** XP42s come standard with AR400 hardened steel shoes. XP36 Pushers have the option to swap to poly or AR400 shoes.
- **Pullback Bars:** All pullback bars on our larger models come standard with 1-1/2" x 8" rubber blades.





Standard Brush Cutter

Weight	750lbs.
Dimensions	77" x 64.5" x 21.5"
GPM Flow Rate	15-22
Cut Capacity	Up to 4"
Motor Size	100cc
Hardware	Comes with 3/4" hydraulic hoses & heavy duty 1/2" ISO flat faced couplers
Deck Plate	3/16" plate with extra heavy duty push bar



Heavy Duty Brush Cutter

Weight	1365lbs.
Dimensions	85" x 74" x 28"
GPM Flow Rate	15-26
Cut Capacity	Up to 8"
Drive Shaft	2"
Motor	160cc, grease filled drive, greaseable zerk fittings
Deck Plate	1/4" plate with extra heavy duty push bar
Blades	3 hardened steel blades - 5" x 1/2"



Extreme Brush Cutter

Weight	1610lbs.
Dimension	83" x 74" x 28"
GPM Flow Rate	27+
Cut Capacity	Up to 12"
Drive Shaft	3.5"
Motor	250cc, grease filled drive, greaseable zerk fittings
Deck Plate	1/4" plate with extra heavy duty push bar
Blades	3 hardened steel blades - 5" x 1/2"



Severe Duty Brush Cutter

Weight	1900lbs.
Dimensions	83" x 74.5" x 28"
GPM Flow Rate	16-26(150cc), 27-35(200cc), & 35-45(250cc)
Cut Capacity	Up to 12"
Drive Shaft	3.5"
Motor	Piston Drive Motor
Deck Plate	1/4" steel deck plate with 1/2" reinforcements
Case Drain	Your Machine must have Case Drain



Standard Pallet Forks

Weight	295lbs. (36"), 315lbs. (42"), 335lbs. (48")
Dimensions	45 1/2" wide x 35 1/2" tall
Forks	4" x 1.25" Fully adjustable
Fork Blades	Mast fits Class II fork blades
Capacity	4,500lbs.
Additional Specs	<ul style="list-style-type: none">• Fully welded mast frame and adjustable forks• Forks lock in at 16" 28" and 40"



Standard Fork Frame

Weight	135lbs.
Mast Dimensions	45 1/2" wide x 35 1/2" tall
Forks	Mast fits Class II fork blades
Additional Specs	Fully welded mast frame with adjustment for fork blades



Heavy Duty Pallet Forks

Weight	295lbs. (36"), 315lbs. (42"), 335lbs. (48") 365lbs. (60")
Dimensions	45 1/2" wide x 35 1/2" tall
Forks	4" x 1.25"
Fork Blades	Mast fits Class II fork blades
Capacity	6,600lbs.
Additional Specs	<ul style="list-style-type: none">• Fully welded mast frame and adjustable forks• Fork blades lock in at 16", 28", & 40"



Heavy Duty Fork Frame

Weight	135lbs.
Mast Dimensions	45 1/2" x 35"
Forks	Mast fits Class II fork blades (16" rail system)
Capacity	6,600lbs.
Additional Specs	Fully welded mast with adjustment for fork blades



Walk Thru Pallet Forks

Weight	305lbs. (36"), 325lbs. (42"), 345lbs. (48")
Mast Dimensions	45 1/2" wide x 35 1/2" tall
Forks	4" x 1.25" forks fully adjustable quick attach system
Capacity	4,000lbs.
Additional Specs	Fully welded mast with opening for easy access in and out of your machine



Walk Thru Fork Frame

Weight	145lbs.
Mast Dimensions	45 1/2" wide x 35 1/2" tall x 3/8" thick with 1/4" flats
Forks	Mast fits Class II fork blades
Additional Specs	Fully welded mast with opening for easy access in and out of your machine



Pallet Fork Grapple

Weight	595lbs. (42" blades) 615lbs. (48" blades)
Forks	Fork Blades are standard class II
Opening Width	<ul style="list-style-type: none">• Oversized, greaseable 1.25" pins• Adjustable pin locations for altered widths
Additional Specs	<ul style="list-style-type: none">• Constructed with HD 4x4" square tubing• 2x10" protected hydraulic cylinder• CNC machined carriage bar with 3 locking locations

Pallet Fork Blade (Individual)

Weight	80lbs. (36"), 90lbs. (42"), 100lbs. (48"), 115lbs. (60")
Capacity	4,000lbs (per set)
Additional Specs	<ul style="list-style-type: none">• Class II pallet fork blades• 4" x 1.25" thick• 16" from the upper rail to lower rail• Bend to top of fork blade is 21 3/4" tall• Clips to lock forks into place• Fully forged fork blades with heel guard





Smooth Bucket

Width Options	60", 66", 72", 78", and 84"
Weight	335lbs. (60"), 350lbs. (66"), 375lbs. (72"), 410lbs. (78"), 425lbs. (84")
Dimensions	29" deep x 20" tall
Steel Cutting Edge	1/2" x 6"
Bucket Specs	3/16" sides and bottom with 1/2" wear bar bottom & 3/8" reinforced sides
Rec. Horsepower	Up to 50HP



Heavy Duty Smooth Bucket

Width Options	66", 72", 78", 84"
Weight	700lbs. (66"), 770lbs. (72"), 825lbs. (78"), 860lbs. (84")
Dimensions	37" deep x 22" tall
Steel Cutting Edge	5/8" x 6" bolt on reversible cutting edge
Bucket Specs	<ul style="list-style-type: none">• 1/4" steel wrap with 3/8" side reinforcement 1/2" bottom• 3/4" weld on cutting edge
Rec. Horsepower	50+



Snow/Mulch Bucket

Width Options	60", 66", 72", 78", 84", 90", 96"
Weight	445lbs. (60"), 495lbs. (66"), 505lbs. (72"), 550lbs. (78"), 570lbs. (84"), 620lbs. (90"), 640lbs. (96")
Dimensions	38" deep x 27" tall
Steel Cutting Edge	5/8" x 6"
Bucket Specs	3/8" sides & bottom with 1/2" wear bars
Rec. Horsepower	Up to 65HP



Rock Bucket

Weight	425lbs. (66") 460lbs. (72")
Dimensions	34" deep x 19" tall
Tines	3/8" tines
Additional Specs	<ul style="list-style-type: none">• 3/8" grade 50 High-Tensile steel slotted bottom and back• 3" square tube frame
Rec. Horsepower	65HP



Hydraulic Concrete Bucket

Weight	470lbs.
Dimensions	59" x 45" x 26"
Capacity	3/4 cubic yard handling capacity
Additional Specs	<ul style="list-style-type: none">• Has a removable chute for easy cleaning• 3/16" thick steel• Features a treaded step & sliding door



Manual Concrete Bucket

Weight	465lbs.
Dimensions	60" x 48" x 19"
Capacity	3/4 cubic yard handling capacity
Additional Specs	<ul style="list-style-type: none">• 11" chute; features a treaded step• 3/16" thick steel



4-in-1 Bucket

Weight	1000lbs.
Length	72"
Hydraulic Cylinders	(2) 1/2" x 8"
Steel Side	1/2" thick steel
Opening Width	38"
Steel Floor Plate	1/4" thick reinforced steel floor plate
Front Cutting Edge	3/4" x 6"
Reversible Rear Edge	5/8" x 6" heat treated bolt on
Additional Specs	Can add teeth or tooth bar to front edge

Bolt On Cutting Edges

Length Options	60", 66", 72", 78", 84", and 96"
Weight	60lbs. (60"), 63lbs. (63"), 70lbs. (72"), 80lbs. (84"), and 90lbs. (96")
Dimensions	5/8" x 6" steel edge
Additional Specs	<ul style="list-style-type: none">• Includes plow bolts 5/8-11" x 2-1/4"• Reversible double edge





Standard Tooth Bucket

Weight	300lbs. (60"), 405lbs. (66"), 430lbs. (72")
Dimensions	29" deep x 20" tall
Teeth	(6) teeth 5.9" long x 2.9" wide
Steel Cutting Edge	1/2" x 6"
Bucket Specs	<ul style="list-style-type: none">• 3/8" reinforced sides and bottom• Wear bars for reinforcement
Rec. Horsepower	50HP Max



Heavy Duty Tooth Bucket

Weight	750lbs. (66"), 780lbs. (72"), 885lbs. (78"), 890lbs. (84")
Dimensions	35" deep x 20" wide
Teeth	5.9" long x 2.9" wide
Steel Cutting Edge	3/4" thick
Bucket Specs	<ul style="list-style-type: none">• 3/8" reinforced sides• 1/2" thick bottom• 1/4" thick back with reinforced plate
Rec. Horsepower	50+ HP



Solid Bottom 2-Cylinder Grapple Bucket

Weight	485lbs.
Dimensions	66" x 34" x 27"
Steel Cutting Edge	3/4" welded on cutting edge
Opening Width	30.5"
Rec. Horsepower	40HP
Bucket Specs	<ul style="list-style-type: none">• 3/16" sides and bottom• Dual 3/8" grapple arms• Rolled rear bottom for added strength
Rec. Horsepower	40HP

2-Cylinder Brush Grapple



Weight	415lbs. (60"), 430lbs. (66")
Dimensions	36" deep x 28" tall
Steel Serrated Tines	3/8"
Tine Spacing	8.5-9"
Open Height	31" front & 36" center
Closed Height	17"
Rec. Horsepower	Up to 40HP
Additional Specs	<ul style="list-style-type: none">• 2" x 8" AG cylinders• Dual hydraulic cylinders with covers• Independent grapple tines



Heavy Duty 2-Cylinder Brush Grapple

Weight	520lbs. (72") 525lbs. (78")
Dimensions	36" deep x 28" tall
Steel Serrated Tines	1/2" steel tines
Tine Spacing	8.5" (72") 9" (78") spacing
Open Height	32" front and 37" center
Closed Height	17"
Additional Specs	<ul style="list-style-type: none">• Independent grapple tines• Dual hydraulic cylinders with covers
Rec. Horsepower	65HP Max



Rock Bucket Grapple

Weight	550lbs.
Dimensions	72" x 34" wide x 27" tall
Teeth	3/8" teeth with 3-3/8" spacing
Opening Width	36"
Additional Specs	<ul style="list-style-type: none">• 3" square tube frame• 1 cylinder grapple with 3000 PSI hoses• 1/2" flat faced quick connect couplers• 3/8" Grade 50 high tensile steel
Rec. Horsepower	50HP



Vertical Extreme Grapple

Weight	1260lbs. (72"), 1270lbs. (78"), 1370lbs. (84")
Dimensions	25.5" deep x 37" tall
Steel Serrated Tines	1-1/2" bottom tines & 3/4" top tines
Opening Width	54"
Tine Spacing	11-1/4"
Additional Specs	<ul style="list-style-type: none">• 2" x 10" dual hydraulic cylinders• Independent grapple tines
Rec. Horsepower	Up to 110HP

XHD Grapple



Weight	1070lbs. (72"), 1090lbs. (78"), 1140 lbs. (84")
Dimensions	40" deep x 35" tall
Steel Serrated Tines	1" outside, 1/2" inside, & 1" top tines
Opening Width	33.25"
Tine Spacing	9"
Rec. Horsepower	Up to 110HP
Additional Specs	<ul style="list-style-type: none">• 2" x 10" dual hydraulic cylinders• Independent grapple tines



6-Way Dozer Blade

Weight	810lbs. (84") 850lbs. (96")
Dimensions	84"/96" x 32" x 21"
Additional Specs	<ul style="list-style-type: none">• Two 2" x 12" hydraulic cylinders• Greaseable pivot points• 5/8" x 6" bolt on reversible edge• Comes with stand-alone 12V wire harness



Round Bale Spear

Weight	145lbs.
Spears & Stabilizers	49" spears & (2) 18" stabilizers
Capacity	3,000lbs.
Frame	46" x 6" x 19"



Square Hay Bale Spear

Weight	210lbs.
Spears	(3) 49" Spears (1-9/16" diameter) Spears weigh 30lbs.
Capacity	3,000lbs.
Frame	58" x 19" x 6"



Grader

Weight	665lbs. (72") 695lbs. (84")
Dimensions	77.25" x 55" x 20" (72") 89.25" x 55" x 20" (84")
Brace	<ul style="list-style-type: none">• 3" tube front brace• 1/4" formed braces and 1/4" sides
Wear Bars	1/2" wear bars
Bucket Specs	<ul style="list-style-type: none">• 1060 reversible bolt-on cutting edges with adjustable height (45° angle)• A36 Main Frame



Rake

Weight	380lbs. (72") 405lbs. (84")
Dimensions	(72" or 84") x 60" x 30"
Teeth	(58) 1/2" welded-on AR400 teeth (72") (68) 1/2" welded-on AR400 teeth (84")
Bucket Specs	<ul style="list-style-type: none">• Frame: 2 x 2"• 3/16" Tubing• Formed gussets and side boards• 5/16" Universal QA Plate



80" Tiller

Weight	675lbs.
Dimensions	98" x 28" x 18"
Rec. Flow Rate	14-28 GPM
Motor	Single 315cc motor
Tines	(36) bolt on, replaceable tines with double sided cutting edge
Tilling Width	80"
Tilling Depth	6"



84" Pick Up Broom

Weight	800lbs.
Shell	3/16" Thick
Motor	800cc
Bristles	<ul style="list-style-type: none">• 40 replaceable steel/poly bristles• Bristles are 24" x 6-3/8"



84" Hydraulic Angle Broom

Weight	795lbs.
Cylinder	2.5" x 8"
Angle Range	22.5° angle one way; 45° Total
Motor	800cc Motor
Bristles	<ul style="list-style-type: none">• 40 replaceable steel/poly bristles• Bristles are 10" x 32"• Wire harness universal



Stump Bucket

Weight	185lbs.
Dimensions	44" x 44.5" x 19.5"
Rec. Horsepower	50HP or less
Cutting Edge	1/2" x 6" cutting edge with 3/8" serrated edge (Teeth welded to edge)
Teeth	(4) 7/8" Thick teeth
Bucket	3/16" wrap & 31" long bucket
Additional Specs	1/4" quick attach system



Heavy Duty Stump Bucket

Weight	425lbs.
Dimensions	52" x 46" x 19"
Cutting Edge	3/4" x 8" cutting edge
Teeth	(3) heavy duty, replaceable teeth with welded on shank and pin on teeth
Additional Specs	<ul style="list-style-type: none">• (2) drain holes• Grade 50, 1/2" steel body with serrated edges with 3" heavy wall tubing
Rec. Horsepower	50+ HP



Stump Bucket Grapple

Weight	535lbs.
Dimensions	62" x 46" x 19"
Cutting Edge	1" x 8" cutting edge with 1/2" serrated edge
Additional Specs	<ul style="list-style-type: none">• 3 replaceable pin on teeth• 1/2" bucket• Greaseable pins
Rec. Horsepower	50+ HP

Log Grapple - Hydraulic Rotation

Weight	540lbs.
Dimensions	47" x 47" x 40"
Opening Width	Opens up to 62", Closes up to 5"
Capacity	2,500lb.
Additional Specs	<ul style="list-style-type: none">• Serrated quick attach & boom• HD welded cylinder• Wire harness universal





Tree Puller

Weight	440lbs.
Dimension	46" x 22" x 30"
Opening Width	10 3/4"
Teeth	<ul style="list-style-type: none">• 4 rows of teeth (20 teeth total)• 1/2" thick steel plate on gripping teeth
Additional Specs	<ul style="list-style-type: none">• Grade 50 Steel• Oversized, greaseable pins; fully enclosed cylinder



Nursery Forks

Weight	450lbs.
Dimensions	43" Tall at center/bend of back rest
Fork Length	65"
Opening Width	60" Maximum opening width
Closing Width	4" Minimum closing width
Capacity	3,000lb.
Additional Specs	Equipped with 1/2" flat face quick connect couplers



Tree Boom/Jib Pole

Weight	165lbs.
Dimensions	72" x 24" x 17"
Frame	16" x 47" x 65"
Tube Boom	4" x 4" x 1/4"
Lifting Capacity	3,500lbs.
Additional Specs	<ul style="list-style-type: none">• 1 1/8" hole for 1" pin• 1/4" quick attach plate



Log Splitter

Weight	690lbs.
Dimensions	96" x 45" x 17"
Capacity	<ul style="list-style-type: none">• 35 Ton, single wedge (10 x 6 x 1")• Splits logs up to 30" in length
Cylinder	5" x 30" cylinder; front serrated push bar
Ideal GPM Flow	15+ (Lower GPM = Slower cut)
Machine PSI	Compatible with machines 2800+ PSI
Additional Specs	Comes with HD 1/2" hoses with quick connect couplers



Quick Attach Auger Head

Weight	360lbs.
Dimensions	46" x 20" x 28"
Capacity	48" hole
Req. GPM Flow Rating	10 - 40 GPM Flow
Additional Specs	<ul style="list-style-type: none">• Planetary Drive• Industry standard 2" hex output shaft



Auger Bits

Weight	55lbs (6"), 100lbs. (9"), 120lbs. (12"), 160lbs. (18"), 200lbs. (24"), 370lbs. (36")
Additional Specs	<ul style="list-style-type: none">• Overall bit length: 54"• Inner & outer teeth are replaceable• Our double flight bits fit with any hex head auger that uses 2" bits



Manual Teleboom

Weight	448lbs.
Length	Max extended: 22ft. Fully contracted: 9ft.
Capacity	Max capacity fully extended: 415lbs. Max capacity fully contracted: 800lbs.



Hydraulic Teleboom

Weight	545lbs.
Length	Max extended: 22.5ft. Fully contracted: 9ft.
Capacity	Max capacity fully extended: 415lbs. Max capacity fully contracted: 800lbs.
Additional Specs	Equipped with 1/2" flat face quick connect couplers



Hitch Plate

Weight	95lbs.
Dimensions	46" x 19" x 12"
Capacity	<ul style="list-style-type: none">• 5/16" plate, 3/8" top bar• Works with 2" receiver



Mini Excavator Brush Cutter

Size Options	36" or 42"
Weight	650lbs. (36") 760lbs. (42")
Dimensions	46" x 50" x 23"
Cut Capacity	4"
Drive Shaft	2"
Deck Plate	3/16" thick reinforced steel deck. Stocked with blank mount plate



42" Severe Duty Mini Excavator Brush Cutter

Weight	890lbs.
Dimensions	51" x 42" x 24"
Cut Capacity	6"
Drive Shaft	2"
Deck Plate	3/16" thick reinforced steel deck. Stocked with blank mount plate



Quick Attach Pallet Forks

Weight	325lbs. (36"), 345lbs. (42"), 365lbs. (48")
Mast Dimensions	45 1/2" wide x 35 1/2" tall - 3/8" thick with 1/4" flats (mast w/ forks is 38 3/4" tall)
Forks	4" x 1.25"
Fork Blades	Mast fits Class II fork blades
Lift Capacity	4,000lbs.
Additional Specs	Fully welded mast frame and adjustable forks



Global Euro Pallet Forks

Weight	320lbs. (36"), 340lbs. (42"), 360lbs. (48"), 390lbs. (60")
Frame	50" Frame with global euro attachment
Fork Blades	Mast fits Class II fork blades
Lift Capacity	6,600lb.
Additional Specs	<ul style="list-style-type: none"> Fully welded mast frame and adjustable forks John Deere Global Euro attachment system



Fork Frame

Weight	165lbs.
Mast Dimensions	49" x 38" x 6"
Forks	Mast fits for Class II fork blades
Capacity	4,000lbs.
Additional Specs	<ul style="list-style-type: none"> Fully welded mast frame with adjustment for fork blades John Deere quick attach system

2-Cylinder Root Grapple



Weight	435lbs. (60") 440lbs. (66")
Dimensions	33" wide x 32" tall
Opening Width	32" front and 37" center
Tine Spacing	9" apart
Rec. Horsepower	Up to 50HP
Additional Specs	<ul style="list-style-type: none"> 3/8" thick steel with greaseable pivot points 2" x 8" dual cylinders - independent grapple tines for uneven loads



Bale Spear

Weight	195lbs.
Spears and Stabilizers	49" spear with (2) 18" stabilizers (all are removable)
Capacity	3,000lbs.



Combo - Bale Spear & Pallet Forks

Weight	195lbs.
Spears and Stabilizers	49" spear with (2) 18" stabilizers (all are removable)
Capacity	3,000lbs.
Forks	48" x 4" x 1.25" Fully adjustable
Capacity	4,000lbs.
Weight	325lbs. (36"), 345lbs. (42"), 365lbs. (48")



Smooth Bucket

Weight	355lbs. (60") & 390lbs. (66")
Dimensions	30" deep x 20" tall
Steel Cutting Edge	1/2" x 6"
Bucket Specs	3/8" sides and bottom with 1/2" wear bars
Rec. Horsepower	50HP or less



Snow/Mulch Bucket

Weight	485lbs. (66") & 535lbs. (72")
Dimensions	39" deep x 28" tall
Steel Cutting Edge	1/2" x 6"
Bucket Specs	<ul style="list-style-type: none"> • 3/8" sides and bottom with 1/2" wear bars • Reinforced back
Rec. Horsepower	Up to 65HP



Rake

Weight	500lbs. (72") 550lbs. (84")
Dimensions	72" x 60" x 30" (72") 84" x 60" x 30" (84")
Teeth	(58) welded on AR400 teeth, 1/2" thick
Bucket Specs	<ul style="list-style-type: none"> • Frame 2 x 2" • 1/4" tube • 3/16" formed gussets



Pin Style Quick Attach Plate

Weight	90lbs.
Dimensions	50" x 17.5" x 2.5"
Plate	1/4" steel
Spacing	<ul style="list-style-type: none"> • 46 7/8" center line from pin to pin • Top upper lip to 1st stud for 200 - 400 loaders - 15" • Top upper lip to 2nd stud for 500 loaders - 18"



Global Euro Attachment Plate

Weight	86lbs.
Dimensions	22" x 51"
Plate	1/4" steel with 1/2" pads
Spacing	<ul style="list-style-type: none"> • 30" center line to holes • 41" center line to top hooks • 14" top hook to pin hole center line

Mini Bobcat

ATTACHMENTS



Pallet Forks

Weight	265lbs. (36") 285lbs. (42") 305lbs. (48")
Mast Dimensions	36" x 4" x 32"
Fork Blades	Mast fits Class II fork blades
Capacity	4,000lb.
Additional Specs	<ul style="list-style-type: none">• Fully Welded mast frame with 3 locking locations• 3/8" thick steel• Mini Bobcat MT50 Mount



48" Root Grapple

Weight	360lbs.
Dimensions	33" deep x 28" tall
Opening Width	34"
Tine Spacing	3/8" tines that are 6" apart
Additional Specs	Single hydraulic cylinder with covers



42" Brush Cutter

Weight	680lbs.
Dimensions	44" x 44" x 15"
GPM Flow Rate	9-20
Cut Capacity	Up to 4"
Drive Shaft	3.5"
Motor	80cc
Deck Plate	3/16" plate with extra heavy duty push bar
Blades	Forged steel heat treated blades (bi-directional)



Hitch Plate

Weight	65lbs.
Dimensions	37" x 18" x 9"
Capacity	1/4" Plate
	Works with 2" receiver

Mini Bobcat

ATTACHMENTS



Smooth Bucket

Weight	200lbs. (36") & 245lbs. (48")
Dimensions	29" deep x 20" tall (36")
Steel Cutting Edge	1/2" thick x 4" wide (36") 1/2" thick x 6" wide (48")
Bucket Specs	3/16" sides and bottom with 1/2" wear bar reinforcement on bottom



Tooth Bucket

Weight	230lbs. (36") & 275lbs. (48")
Dimensions	29" deep x 20" tall
Steel Cutting Edge	1/2" thick x 4" wide
Teeth	• 5.9" long x 2.9" wide • Teeth are welded on with replaceable pin on teeth
Bucket Specs	3/16" sides and bottom with 1/2" wear bar reinforcement on bottom



Snow/Mulch Bucket

Weight	285lbs. (36"), 330lbs. (48"), & 355lbs. (54")
Dimensions	30" deep x 23" tall
Steel Cutting Edge	1/2" x 6" wide
Bucket Specs	• 3/16" sides and bottom with 1/2" wear bar for reinforcement on bottom • Reinforced back and tread steps on top



48" Rake

Weight	210lbs.
Dimensions	37" deep x 27" tall
Teeth	(34) 1/2" welded-on teeth
Bucket Specs	• Frame: 2" x 2" • 11 gauge tubing • 3/16" formed gussets & side boards

Mini Bobcat

ATTACHMENTS



Log Grapple - Manual Rotation

Weight	440lbs.
Opening Width	Opens up to 66", Closes up to 4"
Capacity	2,000lb.
Additional Specs	<ul style="list-style-type: none">• Serrated quick attach & boom• HD welded cyclinder



Log Grapple - Hydraulic Rotation

Weight	510lbs.
Opening Width	Opens up to 66", Closes up to 4"
Capacity	2,000lb.
Additional Specs	<ul style="list-style-type: none">• Serrated quick attach & boom• HD welded cyclinder



Auger Head

Weight	385lbs
Capacity	48" hole
Req. GPM Flow Rating	9-28 GPM flow
Additional Specs	<ul style="list-style-type: none">• Planetary Drive• Industry standard 2" hex output shaft



Auger Bits

Weight	55lbs (6"), 100lbs. (9"), 120lbs. (12"), 160lbs. (18"), 200lbs. (24"), 370lbs. (36")
Additional Specs	<ul style="list-style-type: none">• Overall bit length: 54"• Inner & outer teeth are replaceable• Our double flight bits fit with any hex head auger that uses 2" bits

Mini Bobcat

ATTACHMENTS



Tiller

Weight	440lbs.
Dimensions	56" x 32" x 16"
Rec. Flow Rate	9-16GPM
Tines	(20) bolt on, replaceable tines
Motor	315cc Motor
Tilling Width	42"
Tilling Depth	6"



Mount Plate

Weight	50lbs.
Dimensions	38 1/4" x 21"
Plate	1/4 " steel

DISCLAIMER

Toro Dingo attachments fit Toro Dingo, Ditch Witch, Vermeer, Ramrod, Thomas, Finn, & Boxer.



Mounting Plate

Weight	30lbs.
Dimensions	24 1/8" x 10"
Plate	5/16" thick steel



Hitch Plate

Weight	40lbs.
Dimensions	25" x 9.5" x 11"
Capacity	<ul style="list-style-type: none"> • 5/16" plate • Works with 2" receiver



Pallet Forks

Weight	305lbs. (36"), 325lbs. (42"), 345lbs. (48")
Mast Dimensions	36" x 4" x 32"
Forks	4" x 1.25" Fully adjustable quick attach system
Fork Blades	Mast fits Class II fork blades
Capacity	4,000lbs.
Additional Specs	<ul style="list-style-type: none"> • Fully welded mast frame with 3 locking locations • 3/8" thick



Smooth Bucket

Weight	180lbs. (36"), 200lbs. (42"), 215lbs. (48), 235lbs. (54")
Dimensions	26" deep x 16" tall
Steel Cutting Edge	1/2" thick x 4" wide
Bucket Specs	<ul style="list-style-type: none"> • 3/16" thick sides and bottom • 1/2" bars for reinforcement



Snow/Mulch Bucket

Weight	290lbs. (42"), 310lbs. (48"), 335lbs. (54")
Dimensions	30" deep x 22" tall
Steel Cutting Edge	1/2" x 4"
Bucket Specs	<ul style="list-style-type: none"> • 3/16" steel wrap • 3/8" side reinforcement • (2) 1/2 flat bar reinforcement on bottom



Tooth Bucket

Weight	205lbs. (36"), 230lbs. (42"), 245lbs. (48"), and 265lbs. (54")
Dimensions	26" deep x 16" tall
Teeth	Pin-on, replaceable
Rec. Horsepower	Up to 50HP
Bucket Specs	<ul style="list-style-type: none"> • 3/16" steel wrap with 3/8" side reinforcement • 1/2" flat bar reinforcement on bottom



42" Rock Bucket

Weight	200lbs.
Dimensions	33.4" deep x 19" tall
Tines	3/8" thick steel with 2 3/4" spacing
Rec. Horsepower	Up to 50HP



Log Grapple - Manual Rotation

Weight	330lbs.
Dimensions	31.5" x 31" x 33"
Opening Width	Opens up to 66", Closes up to 4"
Capacity	2,000lb.
Additional Specs	<ul style="list-style-type: none"> • Serrated quick attach & boom • HD welded cyclinder



Log Grapple - Hydraulic Rotation

Weight	405lbs.
Dimensions	31.5" x 31" x 33"
Opening Width	Opens up to 66", Closes up to 4"
Capacity	2,000lb.
Additional Specs	<ul style="list-style-type: none"> • Serrated quick attach & boom • HD welded cyclinder • Wire harness universal



42" Root Grapple

Weight	365lbs.
Dimensions	42" long x 33" deep x 28" tall
Opening Width	34"
Tine Spacing	3/8" tines that are 6" apart
Additional Specs	Single hydraulic cylinder with covers



42" Solid Bottom Grapple

Weight	365lbs.
Dimensions	31" deep x 30" tall
Steel Serrated Tines	3/8" thick, 3/16" bottom
Cutting Edge	5/8"
Additional Specs	Single hydraulic cylinder with covers



42" Brush Cutter

Weight	680lbs.
Dimensions	44" x 44" x 15"
GPM Flow Rate	9-20
Cut Capacity	Up to 4"
Drive Shaft	3.5"
Motor	80cc Fully enclosed motor
Deck Plate	3/16" Steel deck plate with HD Push bar
Blades	Forged steel heat treated blades (bi-directional)



48" Rake

Weight	140lbs. (48")
Dimensions	36" deep x 16" tall
Teeth	(34) 1/4" welded-on teeth
Bucket Specs	<ul style="list-style-type: none"> • Frame: 2 x 2" • 11 gauge tubing • 3/16" formed gussets & side boards



Tiller

Weight	390lbs.
Dimensions	56" x 32" x 16"
Rec. Flow Rate	9-16 GPM
Motor	315cc
Tines	(20) bolt on, replaceable tines
Tilling Width	42"
Tilling Depth	6"



Tree Boom

Weight	90lbs.
Dimensions	25" x 18" x 60"
Tube Boom	55 1/2" tall
Lifting Capacity	2500lbs.
Additional Specs	Constructed out of 3" x 3" square steel tubing



Stump Bucket

Weight	90lbs.
Dimensions	25" x 33" x 16"
Cutting Edge	1/2" x 6" cutting edge
Teeth	(3) welded-on teeth (3/4" steel)
Additional Specs	3/16" wrap 3/8" serrated edge to cut roots



Nursery Forks

Weight	395lbs.
Dimensions	43" Tall at center/bend of back rest
Fork Length	45"
Opening Width	42" maximum opening width
Closing Width	4" minimum closing width
Capacity	2,000lb.
Additional Specs	Equipped with 1/2" flat face quick connect couplers



Auger Head

Weight	365lbs.
Dimensions	29" x 20" x 32"
Capacity	48" hole
Req. GPM Flow Rating	9-28 GPM Flow
Additional Specs:	<ul style="list-style-type: none"> • Planetary Drive • Industry Standard 2" hex output shaft



Auger Bits

Weight	55lbs. (6"), 100lbs. (9"), 120lbs. (12"), 160lbs. (18"), 200lbs. (24"), 370lbs. (36")
Additional Specs	<ul style="list-style-type: none"> • Overall bit length: 54" • Inner & outer teeth are replaceable • Our double flight bits fit with any hex head auger that uses 2" bits

TRACKS



C-Lug Tracks

- Common, general-purpose track for soft and hard surfaces.
- Suitable for construction sites with mixed terrains.
- Offers good balance of traction and durability.



Zig Zag Tracks

- Aggressive pattern ideal for snow, mud, clay, and wet surfaces.
- Excellent self-cleaning capacity.
- Provides maximum traction in slippery areas.



ASV Tracks

- Excels in muddy, sandy, and wet areas.
- Tracks are designed to flex and conform to terrain.
- Their superior floatation allows them to operate where other tracks may get stuck



Block Tracks

- Versatile, great on dirt, asphalt, gravel, concrete, and grassy areas.
- Great general purpose choice.
- Even weight distribution - this can be beneficial for minimal ground disturbance.



Multi-Bar Tracks

- Versatile, all-season track suitable for various conditions.
- Balanced grip and ride comfort on soft and hard surfaces.
- Great for general construction work.



Mini Skid Steer Tracks

- Designed for tight spaces and lighter tasks.
- Mostly used in landscaping, trenching, light construction, and maintenance.
- Optimized for maneuverability and minimal ground disturbance.

HOPPERS

What can hoppers be used for?

Hoppers can be used for all kinds of jobs spanning across industries, such as construction, agriculture, manufacturing, landscaping, etc. Hoppers are a great tool for loading, storing, and transporting materials. The adaptability and efficiency of hoppers make them useful for any operation that requires reliable material handling.

How much material can hoppers hold?

There are multiple sizes available, offering a wide range of capacities to suit different needs. Options vary from 1,000 to 7,000 pounds in weight capacity and from ¼ to 6 cubic yards in volume.



What types of materials do hoppers work for?

Our hoppers are designed to handle a versatile range of materials, making them ideal for various industrial and commercial uses. These durable containers can accommodate nearly any type of waste or material, including heavy metal scraps, soil, trash, recyclables, and even liquid waste. This versatility makes hoppers a highly practical choice for handling and transporting materials across multiple industries.

HOPPERS



Self Dumping
Hoppers



Heavy Duty
Hoppers



Bump Release
Hoppers



Quick Attach
Hoppers



Low Profile
Hoppers



Flying Job
Box



Specialty Stainless
Steel Hoppers



4"

6"

8"

Poly Caster Wheel Benefits:

- Floor Protection
- Noise Reduction
- Shock Absorption
- Grip
- Corrosion Resistance



4"

6"

8"

Steel Caster Wheel Benefits:

- High Load
- Capacity
- Durability
- Extreme Environments
- Chemical Resistance

We've Got Your Mounts Covered

Express Steel specializes in providing robust, high quality mount plates and adapter blanks. These mounts are built to withstand the rigorous demands of your toughest jobs. Whether you are in construction, agriculture, or any field requiring heavy-duty attachments, Express Steel is your local source for secure and dependable mounting solutions.

Our Mount Offerings Include:

- 5/16" Universal Quick Attach Plates: Versatile and adaptable for various equipment.
- Specialized Plates: Bobcat Mini, Toro Dingo, John Deere Pin Style, ASV, and John Deere Global Euro - engineered for perfect compatability.

Heavy-Duty Female Adapter Blanks:

- Cat IT28, JRB 416, JRB 417, JRB 418, Volvo 120, Deere E, and Deere 304.
- Built to connect and endure, ensuring your attachments perform flawlessly.

About Our Mounts:

- 100% made in the United States with high-grade steel: designed for maximum strength and longevity.
- Built for your work ethic: We provide products that work as hard as you do.
- Fast, Reliable Service: We're committed to getting you the mounts you need, when you need them.

Don't compromise on your equipments foundation. Choose Express Steel mounts for the strength and reliability you can trust.



SHIELDS

Polycarbonate Shields

Protect your operator from flying debris, rocks, branches, and other dangerous hazards with impact-resistant poly windshields.

- SUPERCOAT Polycarbonate Lexan Glass - ABRASION RESISTANT. This high-quality coating is applied on both sides to each piece of polycarbonate before it is milled.
- 260 times stronger than glass
- Reduces noise and helps with climate control
- Quick and easy installation. These are direct OEM replacements using same holes and hardware.
- Individually boxed - does not include hardware, frame, or seals.

We offer options for:



Contact Us:

ExpressSteelinc.com

(317) 657-5017

**39 SR-135 Franklin, IN 46131
(Sales Office)**

**1952 W Market St. Nappanee, IN 46550
(Shipping/Manufacturing)**

info@expresssteelinc.com

